



INDUSTRIAL GUARDRAIL SYSTEMS



STRONGEST GUARDRAIL ON THE MARKET
MANUFACTURED IN THE U.S.A.



BEST PRICES | MOST VARIETIES

HEAVY DUTY

- ✓ Posts: 4" Sched 80 pipe
- ✓ Rail: 6" Sched 40 pipe
- ✓ Sleeved HDPE plastic
- ✓ Withstand hits from 12,000 lb forklifts at 8 mph

2 COLOR OPTIONS

OSHA
YELLOW

GUNMETAL
GRAY

ONE-LINE OR TWO-LINE



- ✓ **MINIMAL DEFLECTION EVERY TIME**
Can withstand repeated impacts
- ✓ **ARRIVES FULLY ASSEMBLED**
Standard lengths: 4', 6', 8', 10', and 12'
- ✓ **MULTIPLE INSTALLATION OPTIONS**
Surface mount, core-in, removable, and core and drop
- ✓ **WITHSTANDS EXTREME TEMPERATURES**
-40°F to 210°F

CONTACT US FOR A QUOTE TODAY

1-800-731-1722

WWW.IDEALSHIELD.COM



**KEEP UP WITH THE LATEST
FROM IDEAL SHIELD.**

VISIT OUR BLOG,
STRICTLY SHIELD.



CONTACT US

1- 800-731-1722

EMAIL US AT INFO@IDEALSHIELD.COM

FOR ALL YOUR GUARDRAIL NEEDS

MAINTENANCE-FREE GUARDING SOLUTIONS

STANDARD GUARDRAIL

- Posts: 2.5" Sched 80 pipe
- Rail: 4" Sched 40 pipe
- Sleeved HDPE plastic
- Plated or cored
- Withstand hits from 12,000 lb forklifts at 4 mph

STANDARD GUARDRAIL | MAXIMIZE PROTECTION



RACK SYSTEM GUARDRAIL

- **Standard Rack System:**
4" Sched 40 post, Rail: 2.5" Sched 80 post
- **Heavy Duty Rack System:**
6" Sched 40 pipe, Rail: 4" Sched 80 post
- Sleeved HDPE plastic
- Plated or cored
- Rounded base plates available for corners upon requests

RACK SYSTEM | MAXIMIZE SPACE



GOAL POST

- Schedule 40 steel sleeved in HPDE plastic
- Eliminate costly door repair and replacement
- Custom heights available
- Ships in 3 pieces to reduce freight
- Easy to install

GOAL POST | DOOR PROTECTION





THE ORIGINAL DOME-TOP BOLLARD COVER



NEVER PAINT A BOLLARD AGAIN!

MAINTENANCE-FREE • DURABLE PRODUCTS

MANUFACTURED IN THE U.S.A.

Ideal Shield's 1/4" Dome-Top Bollard Cover offers a simple alternative to painting, saving our customers both time and money. Our 1/4" cover is ideal for high-traffic areas and is available in any color with corporate branding options to suit your needs.

BEST PRICES | MORE SIZES | MORE STYLES

- ✓ **MAINTENANCE-FREE**
Reduces costs and labor by eliminating the need to paint
- ✓ **PATENTED DOME-TOP DESIGN**
Stronger and more resilient than flat top bollard covers
- ✓ **EASY INSTALLATION**
Permanent installation method ensures secure fit
- ✓ **REDUCED SHIPPING COSTS**
Ships from five locations around the U.S. to help reduce lead times and freight costs

PRODUCT FEATURES

- Made of LDPE plastic
- 5 year warranty against fading
- 1/4" nominal wall thickness
- Fits all pipe sizes 3"-12"
- Standard height 52"-84"
- Mold-in and mold-on logo graphics available

CORPORATE BRANDING AVAILABLE



CONTACT US FOR A QUOTE TODAY

1-866-825-8659

WWW.IDEALSHIELD.COM



**KEEP UP WITH THE LATEST
FROM IDEAL SHIELD.**
VISIT OUR BLOG,
STRICTLY SHIELD.



CONTACT US

1- 800-731-1722

EMAIL US AT INFO@IDEALSHIELD.COM

FOR ALL YOUR BOLLARD COVER NEEDS

APPLICATIONS

STOREFRONT PROTECTION | DRIVE-THRUS | C-STORES | CAR WASH | WAREHOUSE FACILITIES
DOCK DOORS | PROPANE TANKS | STORAGE FACILITIES | AND MANY MORE

ELIMINATE MAINTENANCE COSTS

STEEL PIPE BOLLARDS

- 3"-10" Schedule 40 & Schedule 80 pipe bollards
- Available in any length
- Multiple finishes including primed, powder-coated, or galvanized
- Custom fabrication design options include removable, locking, flexible, and eye bolts

COMPETITIVE PRICES, IN STOCK READY TO SHIP!



1/8" BOLLARD COVERS

- 1/8" nominal wall thickness
- Fits 4", 6", and 8" pipe
- Available in our standard colors: yellow, red, handicap blue, gray, orange, white, black, green, and brown
- Installs in minutes
- Mold-on logo graphics available

STOREFRONT PROTECTION



DECORATIVE BOLLARD COVERS

- Fits 4" to 10" pipe (steel inserts available to fit all diameter pipe sizes)
- Fraction of the cost of expensive concrete and cast iron bollards
- Seven decorative styles available
- Designed to match building exterior or corporate branding scheme

ELEGANT PRODUCTS, AFFORDABLE PRICES





1/8" DOME-TOP BOLLARD COVER



NEVER PAINT A BOLLARD AGAIN!

MAINTENANCE-FREE ▪ DURABLE PRODUCTS

MANUFACTURED IN THE U.S.A.



BEST PRICES | MOST VARIETIES | IN STOCK & READY TO SHIP

LONGEST WARRANTY AGAINST FADING IN THE INDUSTRY!



PRODUCT FEATURES

- Made of HDPE plastic
- Fits 4", 6" and 8" pipe sizes
- Standard height 65" - cut to size at no charge
- Available in standards colors: yellow, red, blue, orange, gray, white, black, green, and brown

CONTACT US FOR A QUOTE TODAY

1-800-731-1722

WWW.IDEALSHIELD.COM



**KEEP UP WITH THE LATEST
FROM IDEAL SHIELD.**

VISIT OUR BLOG,
STRICTLY SHIELD.



CONTACT US

1- 800-731-1722

EMAIL US AT INFO@IDEALSHIELD.COM

FOR ALL YOUR BOLLARD COVER NEEDS

STEEL PIPE BOLLARDS

- Base plated or core-in
- 3"-10" Schedule 40 & Schedule 80 pipe bollards
- Available in any length
- Primed, powder-coated, or galvanized
- Custom fabrication design options include removable, locking, flexible, and eye bolts

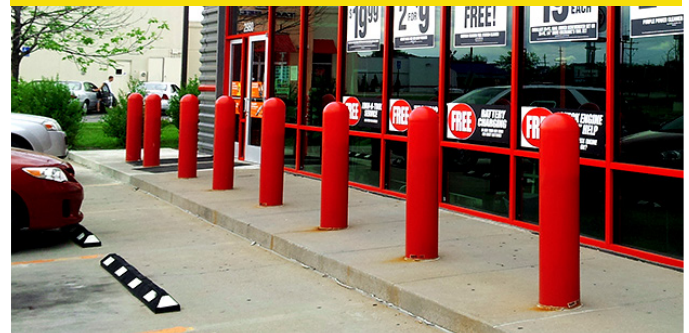
COMPETITIVE PRICES, IN STOCK READY TO SHIP!



1/4" BOLLARD COVERS

- Strongest, most durable choice on the market
- Ideal for every area
- Fits all pipe sizes 3"-12"
- Available in any standard or custom color

BEST PRICES, MORE SIZES, ANY COLOR



DECORATIVE BOLLARD COVERS

- Fits 4" to 10" pipe (steel inserts available to fit all diameter pipe sizes)
- Seven decorative styles available
- Elegant alternative, same intense protection. Perfect for any kind of entry way as well as historical districts and corporate branding.

ELEGANT PRODUCTS, AFFORDABLE PRICES





ALUMINUM HANDRAIL

SLEEK AND VERSATILE ALUMINUM HANDRAIL

DURABLE ■ CUSTOMIZABLE ■ COST EFFECTIVE

MANUFACTURED IN THE U.S.A.

Ideal Shield's Aluminum Handrail system combines durability with an architectural appearance. Our aluminum handrail is easily customizable to suit the needs of any facility. Ships in assembled sections and uses internal/external fittings to make installation fast and easy.

SLEEK APPEARANCE | EASY INSTALLATION

- ✓ **EASILY CUSTOMIZABLE**
Two-line, three-line, picket, slope, infill, or radius
- ✓ **ANY SIZE PROJECT**
Professional stadiums to small office buildings
- ✓ **MULTIPLE INSTALLATION OPTIONS**
Top mount, side-mount, cored, or removable

PRODUCT FEATURES

- Quick and easy installation reduces on-site installation costs
- Custom sizes and styles
- Corrosion-resistant railing and fittings
- Available in sections or continuous runs

CUSTOM END CAPS AVAILABLE



CONTACT US FOR A QUOTE TODAY

1-800-731-1722

WWW.IDEALSHIELD.COM



**KEEP UP WITH THE LATEST
FROM IDEAL SHIELD.**

VISIT OUR BLOG,
STRICTLY SHIELD.



CONTACT US

1-800-731-1722

EMAIL US AT INFO@IDEALSHIELD.COM

FOR ALL YOUR HANDRAIL NEEDS

Ideal Shield's wide range of aluminum handrail options makes creating the exact railing you want simple and cost-effective. All of our handrail meets OSHA and IBC standards. Incorporate style with safety at a fraction of the cost of stainless steel.

APPLICATIONS

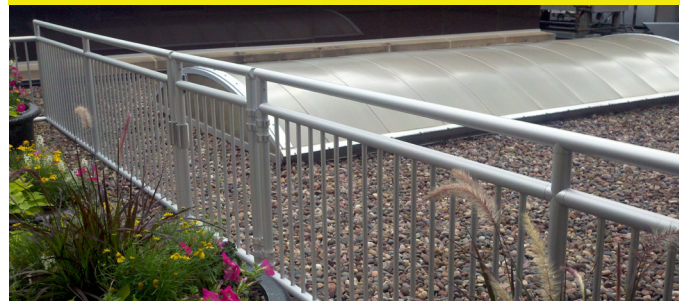
STADIUMS | OFFICE BUILDINGS | HOSPITALS | RESTAURANTS | PARKING GARAGES | SHOPPING CENTERS
RESIDENTIAL | MUNICIPALITIES | LIBRARIES | CHURCHES

COMBINE SAFETY WITH STYLE

PICKET HANDRAIL

- Specially machined mechanical connectors
- No unsightly weld marks
- Corrosion-resistant railing and internal fittings

PICKET HANDRAIL | IBC COMPLIANT



INFILL PANELS

- Provides an architectural look
- Many styles to choose from
- Corrosion-resistant

INFILL PANELS | DECORATIVE STYLES



TWO-LINE ALUMINUM HANDRAIL

- Available in sections or continuous runs
- Incline/decline stairs
- 100+ corrosion-resistant fittings for easy configurations

TWO-LINE | ELIMINATE MAINTENANCE COSTS HANDRAIL





GOAL POST DOOR PROTECTION

STRONGEST HIGH SPEED & DOCK DOOR PROTECTION

LONG LASTING PROTECTION ■ COST EFFECTIVE

MANUFACTURED IN THE U.S.A.

Ideal Shield's Goal Post System is designed to protect your overhead doors from expensive repairs. Our Goal Post protects the entire door area, including track and overhead without interfering with door performance. It deflects forklifts completely upon impact, making it the strongest door protection available.

EASY TO INSTALL | MAINTENANCE FREE

- ✓ **EASY INSTALLATION - NO WELDING REQUIRED**
Modular assembly ships in three pieces
reducing shipping and installation costs
- ✓ **MAINTENANCE FREE - NEVER PAINT AGAIN!**
Withstands extreme temperatures without cracking
Looks like new for years to come - will not peel or fade
- ✓ **SAVE TIME AND MONEY**
Stops forklift damage to dock and high-speed doors,
eliminates frequent door repair and replacement

PRODUCT FEATURES

- Manufactured from 6" schedule 40 steel pipe posts and 4" schedule 40 steel pipe rail sleeved in durable plastic
- Standard Sizes: 8' x 8', 10' x 10', 12' x 12'
- Customizable - Any door, any size
- Core mount or base plate installation available

ELIMINATE COSTLY DOOR REPAIRS



CONTACT US FOR A QUOTE TODAY

1-800-731-1722

WWW.IDEALSHIELD.COM



**KEEP UP WITH THE LATEST
FROM IDEAL SHIELD.**

VISIT OUR BLOG,
STRICTLY SHIELD.



CONTACT US

1-800-731-1722

EMAIL US AT INFO@IDEALSHIELD.COM

FOR ALL YOUR GUARDING NEEDS

Ideal Shield manufactures a full line of products that protect your most valuable assets - people and equipment. Our products are designed to reduce field installation costs and eliminate the need to paint.

APPLICATIONS

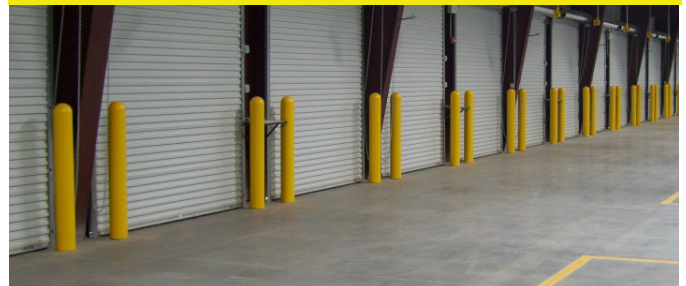
COLD STORAGE FACILITIES | MANUFACTURING FACILITIES | WAREHOUSES | IN-PLANT OFFICES
TRUCK WELLS | SECURITY ENTRANCES | PARKING GARAGES

STRONG PROTECTION, EASY INSTALLATION, REDUCE MAINTENANCE

BOLLARD COVERS

- Fits pipe sizes 3" - 12"
- Both 1/8" and 1/4" wall thickness available
- Quick and easy installation
- Available in any color
- Mold-in and mold-on logo options

BOLLARD COVERS | NEVER PAINT AGAIN!



CLEARANCE BAR SYSTEM

- Available in custom heights
- Offered in any color
- Customize with mold-in and mold-on graphics
- Available with or without Clearance Bar Apparatus. Our Bollard Sign System is used to securely attach your Clearance Bar.

CLEARANCE BARS | HIGHLY-VISIBLE



COLUMN WRAPS

- Cost effective option to expensive stainless steel or metal diamond plates
- Lightweight design reduces freight costs
- No tools required for installation
- Each section can easily be replaced

COLUMN WRAPS | PREVENT COLUMN DAMAGE





STEEL PIPE AND PLASTIC HANDRAIL



NEVER PAINT AGAIN!

INDUSTRIAL STRENGTH ■ MAINTENANCE FREE

MANUFACTURED IN THE U.S.A.

Ideal Shield's unique Steel Pipe and Plastic Handrail System significantly reduces installation costs and will minimize long-term maintenance costs that are associated with traditional steel rail. This simple, clean, and affordable railing system will look new for years to come.

COST-EFFECTIVE | MEETS OSHA STANDARDS

- ✓ **QUICK AND EASY INSTALLATION**
Modular handrail does not require on-site field welding and can be installed by anyone
- ✓ **MAINTENANCE FREE**
Steel pipe sleeved in durable plastic eliminates the need to paint
- ✓ **EXPERIENCED RAILING MANUFACTURER**
With over 35 years of experience, Ideal offers a variety of applications such as infill, picket, 3-line, & roof rail fall protection
- ✓ **CUSTOMIZABLE APPLICATIONS**
Over 125 fittings available to accommodate slopes and unique environments

PRODUCT FEATURES

- Manufactured from steel pipe sleeved in durable plastic
- Railing locks together with external aluminum magnesium fittings utilizing an exclusive knurled set screw
- Standard colors: OSHA yellow, blue, red, white, silver, & black
- Custom color matching available upon request

NEVER PAINT AGAIN!



CONTACT US FOR A QUOTE TODAY

1-800-731-1722

WWW.IDEALSHIELD.COM



**KEEP UP WITH THE LATEST
FROM IDEAL SHIELD.**

VISIT OUR BLOG,
STRICTLY SHIELD.



CONTACT US

1-800-731-1722

EMAIL US AT INFO@IDEALSHIELD.COM

FOR ALL YOUR HANDRAIL NEEDS

Ideal Shield's full line of handrail products are maintenance free and cost-effective. Easy to install, with multiple installation options, our handrail systems offer quality and durability at a competitive price. Custom specifications are available to meet the handrail needs of all facilities.

APPLICATIONS

PEDESTRIAN PROTECTION | TRUCK WELLS | PARKING GARAGES | DISTRIBUTION CENTERS |
WAREHOUSES | HOSPITALS | MANUFACTURING | STADIUMS | RECREATIONAL CENTERS

EXPERIENCED RAILING MANUFACTURER

STEEL PIPE & PLASTIC WITH INFILL

- Made of steel pipe sleeved in plastic
- Core-mount, plate-mount, side-mounted and removable application options
- Can be removed or reused to accommodate changing floor plans
- Railing and infill available in any color

ROOF RAIL FALL PROTECTION

- Steel pipe sleeved in durable plastic reduces maintenance
- Free standing weighted foot system eliminates tripping hazards
- Quick and easy installation
- Available in a variety of colors and designs
- Meets OSHA standards

FACILITY CRIBBING

- Made of Schedule 40 steel pipe sleeved in plastic with speed rail fittings
- Standard and custom infill panels
- Sliding gates or man door available
- No special tools or equipment needed

COST-EFFECTIVE RAILING SYSTEM



PREVENT ROOFTOP ACCIDENTS, PROTECT YOUR WORKERS



CUSTOMIZABLE CONFIGURATIONS



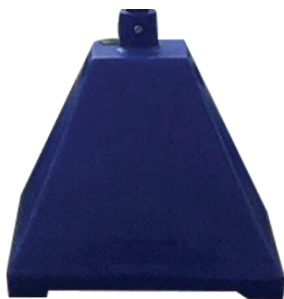


SIGN BASE SYSTEM



Pyramid Sign Base

- Base: 22"H x 22"W x 22"D
- 98" height sleeved in plastic
- Weight:
 - 29 lbs shipped
 - 175 lbs 22 gal. water filled
- Available with wheels
- Drainage option available
- Wind Load tested



Octogan Sign Base

- Base: 8"W x 20"H
- 98" height sleeved in plastic
- Weight:
 - 26 lbs shipped
 - 96 lbs 11.5 gal. water filled



REDUCED COSTS

Lightweight during shipping, heavy when installed

EASY INSTALLATION

Fill with water, base gel, or sand

MULTIPLE OPTIONS

Available in any color to meet the needs of any facility

CONTACT US FOR A QUOTE TODAY

1-800-731-1722

WWW.IDEALSHIELD.COM



**KEEP UP WITH THE LATEST
FROM IDEAL SHIELD.**
VISIT OUR BLOG,
STRICTLY SHIELD.



CONTACT US

1-800-731-1722

EMAIL US AT INFO@IDEALSHIELD.COM

FOR ALL YOUR SIGN SYSTEM NEEDS

APPLICATIONS

PARKING LOTS | CURBSIDE PICK-UP | CROSSWALKS | STADIUMS | SHOPPING CENTERS | PARKS

AFFORDABLE AND CONVENIENT SIGN BASE SYSTEMS

PERMANENT BOLLARD SIGN SYSTEM

- Keep vehicles and sign posts free from damage
- Clean, consistent look. Never paint again.
- Available in any color to meet corporate branding needs
- Ask about our custom logo options!



FLEX POST PRODUCT LINE

- Absorbs shock upon impact to reduce damage
- Sleeved in HDPE plastic to eliminate maintenance
- No special tools required for installation
- ½" diameter carbon steel torsion spring
- Flexes upon impact, returns to upright position afterward
- Available in bollard, bollard sign system, and stick
- Standard on heavy duty bases available



REMOVABLE LOCKING BOLLARD

- Easy to install and remove
- Self-closing hinged lid ensures pedestrian safety
- Ideal for areas requiring temporary vehicle access
- Perfect for emergency and authorized vehicle entrances
- Bollard covers available in any color
- Mold-in or mold-on graphics option

